
Stream: Internet Engineering Task Force (IETF)

RFC: [8658](#)

Category: Standards Track

Published: November 2019

ISSN: 2070-1721

Authors:

S. Jiang, Ed.
Huawei

Y. Fu, Ed.
CNNIC

C. Xie
China Telecom

T. Li
Tsinghua University

M. Boucadair, Ed.
Orange

RFC 8658

RADIUS Attributes for Software Mechanisms Based on Address plus Port (A+P)

Abstract

IPv4-over-IPv6 transition mechanisms provide IPv4 connectivity services over IPv6 native networks during the IPv4/IPv6 coexistence period. DHCPv6 options have been defined to configure clients for Lightweight 4over6, Mapping of Address and Port with Encapsulation (MAP-E), Mapping of Address and Port using Translation (MAP-T) unicast software mechanisms, and multicast softwires. However, in many networks, configuration information is stored in an Authentication, Authorization, and Accounting (AAA) server, which utilizes the Remote Authentication Dial In User Service (RADIUS) protocol to provide centralized management for users. When a new transition mechanism is developed, new RADIUS attributes need to be defined correspondingly.

This document defines new RADIUS attributes to carry software configuration parameters based on Address plus Port from a AAA server to a Broadband Network Gateway. Both unicast and multicast attributes are covered.

Status of This Memo

This is an Internet Standards Track document.

This document is a product of the Internet Engineering Task Force (IETF). It represents the consensus of the IETF community. It has received public review and has been approved for publication by the Internet Engineering Steering Group (IESG). Further information on Internet Standards is available in Section 2 of RFC 7841.

Information about the current status of this document, any errata, and how to provide feedback on it may be obtained at <https://www.rfc-editor.org/info/rfc8658>.

Copyright Notice

Copyright (c) 2019 IETF Trust and the persons identified as the document authors. All rights reserved.

This document is subject to BCP 78 and the IETF Trust's Legal Provisions Relating to IETF Documents (<https://trustee.ietf.org/license-info>) in effect on the date of publication of this document. Please review these documents carefully, as they describe your rights and restrictions with respect to this document. Code Components extracted from this document must include Simplified BSD License text as described in Section 4.e of the Trust Legal Provisions and are provided without warranty as described in the Simplified BSD License.

Table of Contents

1. Introduction
2. Terminology
3. New RADIUS Attributes
 - 3.1. Softwire46-Configuration Attribute
 - 3.1.1. Softwire46 Attributes
 - 3.1.1.1. Softwire46-MAP-E Attribute
 - 3.1.1.2. Softwire46-MAP-T Attribute
 - 3.1.1.3. Softwire46-Lightweight-4over6 Attribute
 - 3.1.2. Softwire46 Sub-attributes
 - 3.1.3. Specification of the Softwire46 Sub-attributes
 - 3.1.3.1. Softwire46-Rule Attribute
 - 3.1.3.2. Softwire46-BR Attribute
 - 3.1.3.3. Softwire46-DMR Attribute
 - 3.1.3.4. Softwire46-V4V6Bind Attribute
 - 3.1.3.5. Softwire46-PORTPARAMS Attribute
 - 3.1.4. Sub-attributes for Softwire46-Rule
 - 3.1.4.1. Rule-IPv6-Prefix Attribute
 - 3.1.4.2. Rule-IPv4-Prefix Attribute
 - 3.1.4.3. EA-Length Attribute
 - 3.1.5. Attributes for Softwire46-v4v6Bind
 - 3.1.5.1. IPv4-Address Attribute
 - 3.1.5.2. Bind-IPv6-Prefix Attribute
 - 3.1.6. Attributes for Softwire46-PORTPARAMS
 - 3.1.6.1. PSID-Offset Attribute
 - 3.1.6.2. PSID-Len Attribute
 - 3.1.6.3. PSID Attribute

- 3.2. [Softwire46-Priority Attribute](#)
 - 3.2.1. [Softwire46-Option-Code](#)
- 3.3. [Softwire46-Multicast Attribute](#)
 - 3.3.1. [ASM-Prefix64 Attribute](#)
 - 3.3.2. [SSM-Prefix64 Attribute](#)
 - 3.3.3. [U-Prefix64 Attribute](#)
- 4. [A Sample Configuration Process with RADIUS](#)
- 5. [Table of Attributes](#)
- 6. [Security Considerations](#)
- 7. [IANA Considerations](#)
 - 7.1. [New RADIUS Attributes](#)
 - 7.2. [RADIUS Softwire46 Configuration and Multicast Attributes](#)
 - 7.3. [Softwire46 Mechanisms and Their Identifying Option Codes](#)
- 8. [References](#)
 - 8.1. [Normative References](#)
 - 8.2. [Informative References](#)
- [Appendix A. DHCPv6 to RADIUS Field Mappings](#)
 - A.1. [OPTION_S46_RULE \(89\) to Softwire46-Rule Sub-TLV Field Mappings](#)
 - A.2. [OPTION_S46_BR \(90\) to Softwire46-BR Field Mappings](#)
 - A.3. [OPTION_S46_DMR \(91\) to Softwire46-DMR](#)
 - A.4. [OPTION_S46_V4V6BIND \(92\) to Softwire46-V4V6Bind](#)
 - A.5. [OPTION_S46_PORTPARAMS \(93\) to Softwire46-PORTPARAMS Field Mappings](#)
 - A.6. [OPTION_S46_PRIORITY \(111\) to Softwire46-PORTPARAMS Field Mappings](#)
 - A.7. [OPTION_V6_PREFIX64 \(113\) to Softwire46-Multicast Attribute Field Mappings](#)
- [Acknowledgements](#)
- [Contributors](#)
- [Authors' Addresses](#)

1. Introduction

Providers have started deploying and transitioning to IPv6. Several IPv4 service continuity mechanisms based on Address plus Port (A+P) [RFC6346] have been proposed for providing unicast IPv4-over-IPv6-only infrastructure, such as Mapping of Address and Port with Encapsulation (MAP-E) [RFC7597], Mapping of Address and Port using Translation (MAP-T) [RFC7599], and Lightweight 4over6 [RFC7596]. Also, [RFC8114] specifies a generic solution for the delivery of IPv4 multicast services to IPv4 clients over an IPv6 multicast network. For each of these mechanisms, DHCPv6 options have been specified for client configuration.

In many networks, user configuration information is stored in an Authentication, Authorization, and Accounting (AAA) server. AAA servers generally communicate using the Remote Authentication Dial In User Service (RADIUS) [RFC2865] protocol. In a fixed broadband network, a Broadband Network Gateway (BNG) acts as the access gateway for users. That is, the BNG acts as both a AAA client to the AAA server and a DHCPv6 server for DHCPv6 messages sent by clients. Throughout this document, the term "BNG" describes a device implementing both the AAA client and DHCPv6 server functions.

Since IPv4-in-IPv6 softwire configuration information is stored in a AAA server and user configuration information is mainly transmitted through DHCPv6 between the BNGs and Customer Premises Equipment (CEs, a.k.a., CPE), new RADIUS attributes are needed to propagate the information from the AAA servers to BNGs so that they can be provided to CEs using the existing DHCPv6 options.

The RADIUS attributes defined in this document provide the configuration to populate the corresponding DHCPv6 options for unicast and multicast softwire configurations, specifically:

- "Mapping of Address and Port with Encapsulation (MAP-E)" [RFC7597] (DHCPv6 options defined in [RFC7598]).
- "Mapping of Address and Port using Translation (MAP-T)" [RFC7599] (DHCPv6 options defined in [RFC7598]).
- "Lightweight 4over6: An Extension to the Dual-Stack Lite Architecture" [RFC7596] (DHCPv6 options defined in [RFC7598]).
- "Unified IPv4-in-IPv6 Softwire Customer Premises Equipment (CPE): A DHCPv6-Based Prioritization Mechanism" [RFC8026].
- "Delivery of IPv4 Multicast Services to IPv4 Clients over an IPv6 Multicast Network" [RFC8114] (DHCPv6 options defined in [RFC8115]).

The contents of the attributes defined in this document have a 1:1 mapping into the fields of the various DHCPv6 options in [RFC7598], [RFC8026], and [RFC8115]. Table 1 shows how the DHCPv6 options map to the corresponding RADIUS attribute. For detailed mappings between each DHCPv6 option field and the corresponding RADIUS attribute or field, see Appendix A.

DHCPv6 Option	RADIUS Attribute
OPTION_S46_RULE (89)	Softwire46-Rule
OPTION_S46_BR (90)	Softwire46-BR
OPTION_S46_DMR (91)	Softwire46-DMR
OPTION_S46_V4V6BIND (92)	Softwire46-V4V6Bind
OPTION_S46_PORTPARAMS (93)	Softwire46-PORTPARAMS
OPTION_S46_PRIORITY (111)	Softwire46-Priority
OPTION_V6_PREFIX64 (113)	Softwire46-Multicast

Table 1: Mapping between DHCPv6 Options and RADIUS Attributes

A RADIUS attribute for Dual-Stack Lite [RFC6333] is defined in [RFC6519].

This document targets deployments where a trusted relationship is in place between the RADIUS client and server.

2. Terminology

The key words "MUST", "MUST NOT", "REQUIRED", "SHALL", "SHALL NOT", "SHOULD", "SHOULD NOT", "RECOMMENDED", "NOT RECOMMENDED", "MAY", and "OPTIONAL" in this document are to be interpreted as described in BCP 14 [RFC2119] [RFC8174] when, and only when, they appear in all capitals, as shown here.

The reader should be familiar with the concepts and terms defined in [RFC7596], [RFC7597], [RFC7599], and [RFC8026].

The terms "multicast Basic Bridging BroadBand" element (mB4) and "multicast Address Family Transition Router" element (mAFTR) are defined in [RFC8114].

Softwire46 (S46) is used throughout to denote any of the IPv4-in-IPv6 softwire mechanisms listed above. Additionally, the following abbreviations are used within the document:

BNG:	Broadband Network Gateway
BR:	Border Relay
CE:	Customer Edge
CoA:	Change-of-Authorization
DMR:	Default Mapping Rule
EA:	Embedded Address

lwAFTR:	Lightweight Address Family Transition Router
MAP-E:	Mapping of Address and Port with Encapsulation
MAP-T:	Mapping of Address and Port using Translation
PSID:	Port Set Identifier
TLV:	Type, Length, Value

3. New RADIUS Attributes

This section defines the following attributes:

1. Software46-Configuration Attribute ([Section 3.1](#)):

This attribute carries the configuration information for MAP-E, MAP-T, and Lightweight 4over6. The configuration information for each Software46 mechanism is carried in the corresponding Software46 attributes. Different attributes are required for each Software46 mechanism.

2. Software46-Priority Attribute ([Section 3.2](#)):

Depending on the deployment scenario, a client may support several different Software46 mechanisms. Therefore, a client may request configuration for more than one Software46 mechanism at a time. The Software46-Priority Attribute contains information allowing the client to prioritize which mechanism to use, corresponding to OPTION_S46_PRIORITY defined in [\[RFC8026\]](#).

3. Software46-Multicast Attribute ([Section 3.3](#)):

This attribute conveys the IPv6 prefixes to be used in [\[RFC8114\]](#) to synthesize IPv4-embedded IPv6 addresses. The BNG uses the IPv6 prefixes returned in the RADIUS Software46-Multicast Attribute to populate the DHCPv6 PREFIX64 Option [\[RFC8115\]](#).

All of these attributes are allocated from the RADIUS "Extended Type" code space per [\[RFC6929\]](#).

All of these attribute designs follow [\[RFC6158\]](#) and [\[RFC6929\]](#).

This document adheres to the guidance in [\[RFC8044\]](#) for defining new RADIUS attributes.

3.1. Software46-Configuration Attribute

This attribute is of type "tlv", as defined in "Remote Authentication Dial-In User Service (RADIUS) Protocol Extensions" [\[RFC6929\]](#). It contains some sub-attributes, with the following requirements:

- The Software46-Configuration Attribute **MUST** contain one or more of the following attributes: Software46-MAP-E, Software46-MAP-T, and/or Software46-Lightweight-4over6.

- The Software46-Configuration Attribute conveys the configuration information for MAP-E, MAP-T, or Lightweight 4over6. The BNG **SHALL** use the configuration information returned in the RADIUS attribute to populate the DHCPv6 Software46 container option(s) defined in [Section 5](#) of [RFC7598].
- The Software46-Configuration Attribute **MAY** appear in an Access-Accept packet. It **MAY** also appear in an Access-Request packet to indicate a preferred Software46 configuration. However, the server is not required to honor such a preference.
- The Software46-Configuration Attribute **MAY** appear in a CoA-Request packet.
- The Software46-Configuration Attribute **MAY** appear in an Accounting-Request packet.
- The Software46-Configuration Attribute **MUST NOT** appear in any other RADIUS packet.

The Software46-Configuration Attribute is structured as follows:

Type

241

Length

Indicates the total length, in bytes, of all fields of this attribute, including the Type, Length, Extended-Type, and the entire length of the embedded attributes.

Extended-Type

9

Value

Contains one or more of the following attributes. Each attribute type may appear once at most:

Software46-MAP-E

For configuring MAP-E clients. For the construction of this attribute, refer to [Section 3.1.1.1](#).

Software46-MAP-T

For configuring MAP-T clients. For the construction of this attribute, refer to [Section 3.1.1.2](#).

Software46-Lightweight-4over6

For configuring Lightweight 4over6 clients. For the construction of this attribute, refer to [Section 3.1.1.3](#).

The Software46-Configuration Attribute is associated with the following identifier: 241.9.

3.1.1. Software46 Attributes

The Software46 attributes can only be encapsulated in the Software46-Configuration Attribute. Depending on the deployment scenario, a client might request more than one transition mechanism at a time. There **MUST** be at least one Software46 attribute encapsulated in one Software46-Configuration Attribute. There **MUST** be at most one instance of each type of Software46 attribute encapsulated in one Software46-Configuration Attribute.

There are three types of Software46 attributes, namely:

1. Software46-MAP-E ([Section 3.1.1.1](#))
2. Software46-MAP-T ([Section 3.1.1.2](#))
3. Software46-Lightweight 4over6 ([Section 3.1.1.3](#))

Each type of Software46 attribute contains a number of sub-attributes, defined in [Section 3.1.3](#). The hierarchy of the Software46 attributes is shown in [Figure 1](#). [Section 3.1.2](#) describes which sub-attributes are mandatory, optional, or not permitted for each defined Software46 attribute.

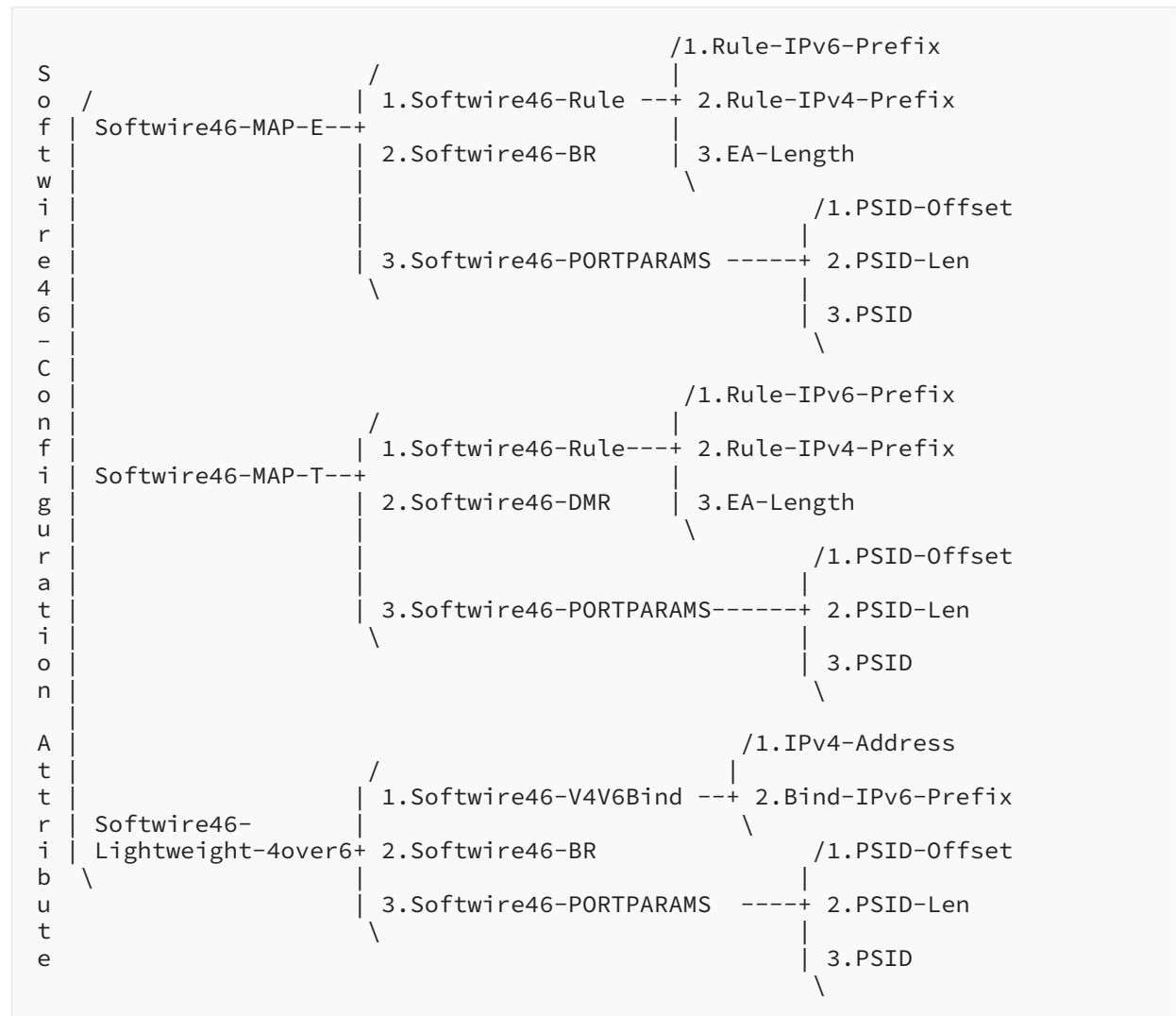


Figure 1: Software46 Attribute Hierarchy

3.1.1.1. Software46-MAP-E Attribute

The Software46-MAP-E attribute is designed to carry the configuration information for MAP-E. The structure of Software46-MAP-E is shown below:

TLV-Type

1

TLV-Length

Indicates the length of this attribute, including the TLV-Type, TLV-Length, and TLV-Value fields.

TLV-Value

Contains a set of sub-attributes, with the following requirements:

It **MUST** contain Software46-Rule, defined in [Section 3.1.3.1](#).

It **MUST** contain Software46-BR, defined in [Section 3.1.3.2](#).

It **MAY** contain Software46-PORTPARAMS, defined in [Section 3.1.3.5](#).

3.1.1.2. Software46-MAP-T Attribute

The Software46-MAP-T attribute is designed to carry the configuration information for MAP-T. The structure of Software46-MAP-T is shown below:

TLV-Type

2

TLV-Length

Indicates the length of this attribute, including the TLV-Type, TLV-Length, and TLV-Value fields.

TLV-Value

Contains a set of sub-attributes, with the following requirements:

It **MUST** contain Software46-Rule, defined in [Section 3.1.3.1](#).

It **MUST** contain Software46-DMR, defined in [Section 3.1.3.3](#).

It **MAY** contain Software46-PORTPARAMS, defined in [Section 3.1.3.5](#).

3.1.1.3. Software46-Lightweight-4over6 Attribute

The Software46-Lightweight-4over6 attribute is designed to carry the configuration information for Lightweight 4over6. The structure of Software46-Lightweight-4over6 is shown below:

TLV-Type

3

TLV-Length

Indicates the length of this attribute, including the TLV-Type, TLV-Length, and TLV-Value fields.

TLV-Value

Contains a set of sub-attributes as follows:

It **MUST** contain Software46-BR, defined in [Section 3.1.3.2](#).

It **MUST** contain Software46-V4V6Bind, defined in [Section 3.1.3.4](#).

It **MAY** contain Software46-PORTPARAMS, defined in [Section 3.1.3.5](#).

3.1.2. Software46 Sub-attributes

[Table 2](#) shows which encapsulated sub-attributes are mandatory, optional, or not permitted for each defined Software46 attribute.

Sub-attributes	MAP-E	MAP-T	Lightweight 4over6
Software46-BR	1+	0	1+
Software46-Rule	1	1	0
Software46-DMR	0	1	0
Software46-V4V6Bind	0	0	1
Software46-PORTPARAMS	0-1	0-1	0-1

Table 2: Software46 Sub-attributes

The following list defines the meaning of the [Table 2](#) entries.

- 0 Not permitted
- 0-1 Optional; zero or one instance of the attribute may be present.
- 1 Mandatory; only one instance of the attribute must be present.
- 1+ Mandatory; one or more instances of the attribute may be present.

3.1.3. Specification of the Software46 Sub-attributes

3.1.3.1. Software46-Rule Attribute

Software46-Rule can only be encapsulated in Software46-MAP-E ([Section 3.1.1.1](#)) or Software46-MAP-T ([Section 3.1.1.2](#)). Depending on the deployment scenario, one Basic Mapping Rule (BMR) and zero or more Forwarding Mapping Rules (FMRs) **MUST** be included in Software46-MAP-E and Software46-MAP-T.

Each type of Software46-Rule also contains a number of sub-attributes, including Rule-IPv6-Prefix, Rule-IPv4-Prefix, and EA-Length. The structure of the sub-attributes for Software46-Rule is defined in [Section 3.1.4](#).

Defining multiple TLV types achieves the same design goals as the "Software46 Rule Flags" defined in [Section 4.1](#) of [\[RFC7598\]](#). Using a TLV type set to 5 is equivalent to setting the F flag in the OPTION_S46_RULE S46 Rule Flags field.

TLV-Type

4 Basic Mapping Rule only (not to be used for forwarding)

5 Forwarding Permitted Mapping Rule

TLV-Length

Indicates the length of this attribute, including the TLV-Type, TLV-Length, and TLV-Value fields.

Data Type

The attribute Software46-Rule is of type "tlv" ([Section 3.13](#) of [\[RFC8044\]](#)).

TLV-Value

This field contains a set of attributes as follows:

Rule-IPv6-Prefix

This attribute contains the IPv6 prefix for use in the MAP rule. Refer to [Section 3.1.4.1](#).

Rule-IPv4-Prefix

This attribute contains the IPv4 prefix for use in the MAP rule. Refer to [Section 3.1.4.2](#).

EA-Length

This attribute contains the Embedded Address (EA) bit length. Refer to [Section 3.1.4.3](#).

3.1.3.2. Software46-BR Attribute

Software46-BR can only be encapsulated in Software46-MAP-E ([Section 3.1.1.1](#)) or Software46-Lightweight-4over6 ([Section 3.1.1.3](#)).

There **MUST** be at least one Software46-BR included in each Software46-MAP-E or Software46-Lightweight-4over6.

The structure of Software46-BR is shown below:

TLV-Type

6

TLV-Length

18 octets

Data Type

The attribute Software46-BR is of type "ipv6addr" ([Section 3.9](#) of [\[RFC8044\]](#)).

TLV-Value

br-ipv6-address. A fixed-length field of 16 octets that specifies the IPv6 address for the Software46 Border Relay (BR).

3.1.3.3. Software46-DMR Attribute

Software46-DMR may only appear in Software46-MAP-T ([Section 3.1.1.2](#)). There **MUST** be exactly one Software46-DMR included in one Software46-MAP-T.

The structure of Software46-DMR is shown below:

TLV-Type

7

TLV-Length

4 + length of dmr-ipv6-prefix specified in octets.

Data Type

The attribute Software46-DMR is of type "ipv6prefix" ([Section 3.10](#) of [\[RFC8044\]](#)).

TLV-Value

A variable-length (dmr-prefix6-len) field specifying the IPv6 prefix (dmr-ipv6-prefix) for the BR. This field is right-padded with zeros to the nearest octet boundary when dmr-prefix6-len is not divisible by 8. Prefixes with lengths from 0 to 96 are allowed.

3.1.3.4. Software46-V4V6Bind Attribute

Software46-V4V6Bind may only be encapsulated in Software46-Lightweight-4over6 ([Section 3.1.1.3](#)). There **MUST** be exactly one Software46-V4V6Bind included in each Software46-Lightweight-4over6.

The structure of Software46-V4V6Bind is shown below:

TLV-Type

8

TLV-Length

Indicates the length of this attribute, including the TLV-Type, TLV-Length, and TLV-Value fields.

Data Type

The attribute Software46-V4V6Bind is of type "tlv" ([Section 3.13](#) of [\[RFC8044\]](#)).

TLV-Value

This field contains a set of attributes as follows:

IPv4-Address

This attribute contains an IPv4 address, used to specify the full or shared IPv4 address of the CE. Refer to [Section 3.1.5.1](#).

Bind-IPv6-Prefix

This attribute contains an IPv6 prefix used to indicate which configured prefix the Software46 CE should use for constructing the software. Refer to [Section 3.1.5.2](#).

3.1.3.5. Software46-PORTPARAMS Attribute

Software46-PORTPARAMS is optional. It is used to specify port set information for IPv4 address sharing between clients. Software46-PORTPARAMS **MAY** be included in any of the Software46 attributes.

The structure of Softwire46-PORTPARAMS is shown below:

TLV-Type
9

TLV-Length

Indicates the length of this attribute, including the TLV-Type, TLV-Length, and TLV-Value fields.

Data Type

The attribute Softwire46-PORTPARAMS is of type "tlv" ([Section 3.13](#) of [\[RFC8044\]](#)).

TLV-Value

This field contains a set of attributes as follows:

PSID-Offset

This attribute specifies the numeric value for the Softwire46 algorithm's excluded port range/offset bits (a bits). Refer to [Section 3.1.6.1](#).

PSID-Len

This attribute specifies the number of significant bits in the PSID field (also known as 'k'). Refer to [Section 3.1.6.2](#).

PSID

This attribute specifies the PSID value. Refer to [Section 3.1.6.3](#).

3.1.4. Sub-attributes for Softwire46-Rule

There are two types of Softwire46-Rule: the Basic Mapping Rule and the Forwarding Mapping Rule, indicated by the value in the TLV-Type field of Softwire46-Rule ([Section 3.1.3.1](#)).

Each type of Softwire46-Rule also contains a number of sub-attributes as detailed in the following subsections.

3.1.4.1. Rule-IPv6-Prefix Attribute

Rule-IPv6-Prefix is **REQUIRED** for every Softwire46-Rule. There **MUST** be exactly one Rule-IPv6-Prefix encapsulated in each type of Softwire46-Rule.

Rule-IPv6-Prefix follows the framed IPv6 prefix designed in [\[RFC3162\]](#) and [\[RFC8044\]](#).

The structure of Rule-IPv6-Prefix is shown below:

TLV-Type
10

TLV-Length

4 + length of rule-ipv6-prefix specified in octets.

Data Type

The attribute Rule-IPv6-Prefix is of type "ipv6prefix" ([Section 3.10](#) of [\[RFC8044\]](#)).

TLV-Value

A variable-length field that specifies an IPv6 prefix (rule-ipv6-prefix) appearing in the MAP rule.

3.1.4.2. Rule-IPv4-Prefix Attribute

This attribute is used to convey the MAP Rule IPv4 prefix. The structure of Rule-IPv4-Prefix is shown below:

TLV-Type

11

TLV-Length

4 + length of rule-ipv4-prefix specified in octets.

Data Type

The attribute Rule-IPv4-Prefix is of type "ipv4prefix" ([Section 3.11](#) of [\[RFC8044\]](#)).

TLV-Value

A variable-length field that specifies an IPv4 prefix (rule-ipv4-prefix) appearing in the MAP rule.

3.1.4.3. EA-Length Attribute

This attribute is used to convey the Embedded Address (EA) bit length. The structure of EA-Length is shown below:

TLV-Type

12

TLV-Length

6 octets

Data Type

The attribute EA-Length is of type "integer" ([Section 3.1](#) of [\[RFC8044\]](#)).

TLV-Value

EA-len; 32 bits long. Specifies the Embedded Address (EA) bit length. Allowed values range from 0 to 48.

3.1.5. Attributes for Softwire46-v4v6Bind**3.1.5.1. IPv4-Address Attribute**

The IPv4-Address **MAY** be used to specify the full or shared IPv4 address of the CE.

The structure of IPv4-Address is shown below:

TLV-Type

13

TLV-Length

6 octets

Data Type

The attribute IPv4-Address is of type "ipv4addr" ([Section 3.8](#) of [RFC8044]).

TLV-Value

32 bits long. Specifies the IPv4 address (ipv4-address) to appear in Softwire46-V4V6Bind ([Section 3.1.3.4](#)).

3.1.5.2. Bind-IPv6-Prefix Attribute

The Bind-IPv6-Prefix is used by the CE to identify the correct IPv6 prefix to be used as the tunnel source.

The structure of Bind-IPv6-Prefix is shown below:

TLV-Type

14

TLV-Length

4 + length of bind-ipv6-prefix specified in octets.

Data Type

The attribute Bind-IPv6-Prefix is of type "ipv6prefix" ([Section 3.10](#) of [RFC8044]).

TLV-Value

A variable-length field specifying the IPv6 prefix or address for the Softwire46 CE (bind-ipv6-prefix). This field is right-padded with zeros to the nearest octet boundary when the prefix length is not divisible by 8.

3.1.6. Attributes for Softwire46-PORTPARAMS

3.1.6.1. PSID-Offset Attribute

This attribute is used to convey the Port Set Identifier offset as defined in [RFC7597]. This attribute is encoded in 32 bits as per the recommendation in [Appendix A.2.1](#) of [RFC6158].

The structure of PSID-Offset is shown below:

TLV-Type

15

TLV-Length

6 octets

Data Type

The attribute PSID-Offset is of type "integer" ([Section 3.1](#) of [RFC8044]).

TLV-Value

Contains the PSID-Offset (8 bits) right justified, and the unused bits in this field **MUST** be set to zero. This field specifies the numeric value for the Softwire46 algorithm's excluded port range/offset bits (a bits), as per [Section 5.1](#) of [RFC7597].

Default values for this field are specific to the software mechanism being implemented and are defined in the relevant specification document.

3.1.6.2. PSID-Len Attribute

This attribute is used to convey the PSID length as defined in [RFC7597]. This attribute is encoded in 32 bits as per the recommendation in Appendix A.2.1 of [RFC6158].

The structure of PSID-Len is shown below:

TLV-Type
16

TLV-Length
6 octets

Data Type
The attribute PSID-Len is of type "integer" (Section 3.1 of [RFC8044]).

TLV-Value
Contains the PSID-len (8 bits) right justified, and the unused bits in this field **MUST** be set to zero. This field specifies the number of significant bits in the PSID field (also known as 'k'). When set to 0, the PSID field is to be ignored. After the first a bits, there are k bits in the port number representing the value of the PSID. Subsequently, the address-sharing ratio would be 2^k .

3.1.6.3. PSID Attribute

This attribute is used to convey the PSID as defined in [RFC7597]. This attribute is encoded in 32 bits as per the recommendation in Appendix A.2.1 of [RFC6158].

The structure of PSID is shown below:

TLV-Type
17

TLV-Length
6 octets

Data Type
The attribute PSID is of type "integer" (Section 3.1 of [RFC8044]).

TLV-Value
Contains the PSID (16 bits) right justified, and the unused bits in this field **MUST** be set to zero.

The PSID value algorithmically identifies a set of ports assigned to a CE. The first k bits on the left of this 2-octet field are the PSID value. The remaining (16-k) bits on the right are padding zeros.

3.2. Software46-Priority Attribute

The Software46-Priority Attribute includes an ordered list of Software46 mechanisms allowing the client to prioritize which mechanism to use, corresponding to `OPTION_S46_PRIORITY` defined in [RFC8026]. The following requirements apply:

The Software46-Priority Attribute **MAY** appear in an Access-Accept packet. It **MAY** also appear in an Access-Request packet.

The Software46-Priority Attribute **MAY** appear in a CoA-Request packet.

The Software46-Priority Attribute **MAY** appear in an Accounting-Request packet.

The Software46-Priority Attribute **MUST NOT** appear in any other RADIUS packet.

The Software46-Priority Attribute is structured as follows:

Type

241

Length

Indicates the length of this attribute, including the Type, Length, Extended-Type and Value fields.

Extended-Type

10

TLV-Value

The attribute includes one or more Software46-Option-Code TLVs: A Software46-Priority Attribute **MUST** contain at least one Software46-Option-Code TLV (Section 3.2.1).

Software46 mechanisms are prioritized in the appearance order in the Software46-Priority Attribute. That is, the first-appearing mechanism is most preferred.

The Software46-Priority Attribute is associated with the following identifier: 241.10.

3.2.1. Software46-Option-Code

This attribute is used to convey an option code assigned to a Software46 mechanism [RFC8026]. This attribute is encoded in 32 bits as per the recommendation in Appendix A.2.1 of [RFC6158].

The structure of Software46-Option-Code is shown below:

TLV-Type

18

TLV-Length

6 octets

Data Type

The attribute Software46-Option-Code is of type "integer" (Section 3.1 of [RFC8044]).

TLV-Value

A 32-bit IANA-registered option code representing a Software46 mechanism (Software46-option-code). The codes and their corresponding Software46 mechanisms are listed in [Section 7.3](#).

3.3. Software46-Multicast Attribute

The Software46-Multicast Attribute conveys the IPv6 prefixes to be used to synthesize multicast and unicast IPv4-embedded IPv6 addresses as per [RFC8114]. This attribute is of type "tlv" and contains additional TLVs. The following requirements apply:

- The BNG **SHALL** use the IPv6 prefixes returned in the RADIUS Software46-Multicast Attribute to populate the DHCPv6 PREFIX64 Option [RFC8115].
- This attribute **MAY** be used in Access-Request packets as a hint to the RADIUS server. For example, if the BNG is preconfigured for Software46-Multicast, these prefixes may be inserted in the attribute. The RADIUS server **MAY** ignore the hint sent by the BNG, and it **MAY** assign a different Software46-Multicast Attribute.
- The Software46-Multicast Attribute **MAY** appear in an Access-Request, Access-Accept, CoA-Request, and Accounting-Request packet.
- The Software46-Multicast Attribute **MUST NOT** appear in any other RADIUS packet.
- The Software46-Multicast Attribute **MAY** contain ASM-Prefix64 ([Section 3.3.1](#)), SSM-Prefix64 ([Section 3.3.2](#)), and U-Prefix64 ([Section 3.3.3](#)).
- The Software46-Multicast Attribute **MUST** include ASM-Prefix64 or SSM-Prefix64, and it **MAY** include both.
- The U-Prefix64 **MUST** be present when SSM-Prefix64 is present. U-Prefix64 **MAY** be present when ASM-Prefix64 is present.

The Software46-Multicast Attribute is structured as follows:

Type

241

Length

This field indicates the total length in bytes of all fields of this attribute, including the Type, Length, Extended-Type, and the entire length of the embedded attributes.

Extended-Type

11

Value

This field contains a set of attributes as follows:

ASM-Prefix64

This attribute contains the Any-Source Multicast (ASM) IPv6 prefix. Refer to [Section 3.3.1](#).

SSM-Prefix64

This attribute contains the Source-Source Multicast (SSM) IPv6 prefix. Refer to [Section 3.3.2](#).

U-Prefix64

This attribute contains the IPv4 prefix used for address translation. Refer to [Section 3.3.3](#).

The Software46-Multicast Attribute is associated with the following identifier: 241.11.

3.3.1. ASM-Prefix64 Attribute

The ASM-Prefix64 attribute is structured as follows:

TLV-Type

19

TLV-Length

16 octets. The length of asm-prefix64 must be /96 [[RFC8115](#)].

Data Type

The attribute ASM-Prefix64 is of type "ipv6prefix" ([Section 3.10](#) of [[RFC8044](#)]).

TLV-Value

This field specifies the IPv6 multicast prefix (asm-prefix64) to be used to synthesize the IPv4-embedded IPv6 addresses of the multicast groups in the ASM mode. The conveyed multicast IPv6 prefix **MUST** belong to the ASM range.

3.3.2. SSM-Prefix64 Attribute

The SSM-Prefix64 attribute is structured as follows:

Type

20

TLV-Length

16 octets. The length of ssm-prefix64 must be /96 [[RFC8115](#)].

Data Type

The attribute SSM-Prefix64 is of type "ipv6prefix" ([Section 3.10](#) of [[RFC8044](#)]).

TLV-Type

This field specifies the IPv6 multicast prefix (ssm-prefix64) to be used to synthesize the IPv4-embedded IPv6 addresses of the multicast groups in the SSM mode. The conveyed multicast IPv6 prefix **MUST** belong to the SSM range.

3.3.3. U-Prefix64 Attribute

The structure of U-Prefix64 is shown below:

TLV-Type

21

TLV-Length

4 + length of unicast-prefix. As specified in [RFC6052], the unicast-prefix prefix length **MUST** be set to 32, 40, 48, 56, 64, or 96.

Data Type

The attribute U-Prefix64 is of type "ipv6prefix" (Section 3.10 of [RFC8044]).

TLV-Value

This field identifies the IPv6 unicast prefix (u-prefix64) to be used in the SSM mode for constructing the IPv4-embedded IPv6 addresses representing the IPv4 multicast sources in the IPv6 domain. It may also be used to extract the IPv4 address from the received multicast data flows.

4. A Sample Configuration Process with RADIUS

Figure 2 illustrates how the RADIUS and DHCPv6 protocols interwork to provide CE with software configuration information.

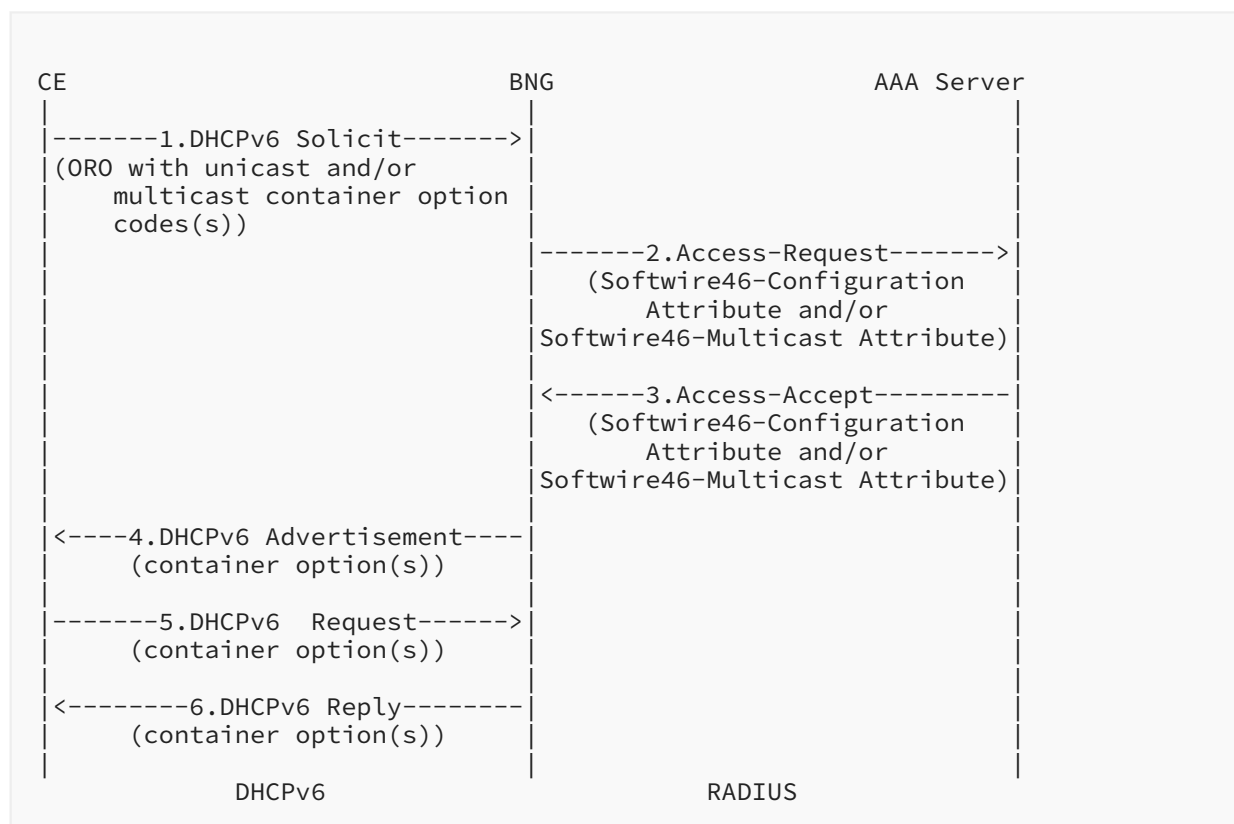


Figure 2: Interaction between DHCPv6 and AAA Server with RADIUS Authentication

1. The CE creates a DHCPv6 Solicit message. For unicast software configuration, the message includes an OPTION_REQUEST_OPTION (6) with the Software46 Container option code(s) as defined in [RFC7598]. OPTION_S46_CONT_MAPE (94) should be included for MAP-E,

- OPTION_S46_CONT_MAPT (95) for MAP-T, and OPTION_S46_CONT_LW (96) for Lightweight 4over6. For multicast configuration, the option number for OPTION_V6_PREFIX64 (113) is included in the client's Option Request Option (ORO). The message is sent to the BNG.
2. On receipt of the DHCPv6 Solicit message, the BNG constructs a RADIUS Access-Request message containing a User-Name Attribute (1) (containing either a CE Media Access Control (MAC) address, interface-id, or both) and a User-Password Attribute (2) (with a preconfigured shared password between the CE and AAA server as defined in [RFC2865]). The Software46-Configuration Attribute and/or Software46-Multicast Attribute are also included (as requested by the client). The resulting message is sent to the AAA server.
 3. The AAA server authenticates the request. If this is successful, and a suitable configuration is available, an Access-Accept message is sent to the BNG containing the requested Software46-Configuration Attribute or Software46-Multicast Attribute. It is the responsibility of the AAA server to ensure the consistency of the provided configuration.
 4. The BNG maps the received software configuration into the corresponding fields in the DHCPv6 software configuration option(s). These are included in the DHCPv6 Advertise message, which is sent to the CE.
 5. The CE sends a DHCPv6 Request message. In the ORO, the option codes of any of the required software options that were received in the DHCPv6 Advertise message are included.
 6. The BNG sends a DHCPv6 Reply message to the client containing the software container option(s) enumerated in the ORO.

The authorization operation could be done independently after the authentication process. In this case, steps 1-5 are completed as above, then the following steps are performed:

- 6a. When the BNG receives the DHCPv6 Request, it constructs a RADIUS Access-Request message, which contains a Service-Type Attribute (6) with the value "Authorize Only" (17), the corresponding Software46-Configuration Attribute, and a State Attribute obtained from the previous authentication process according to [RFC5080]. The resulting message is sent to the AAA server.
- 7a. The AAA server checks the authorization request. If it is approved, an Access-Accept message is returned to the BNG with the corresponding Software46-Configuration Attribute.
- 8a. The BNG sends a Reply message to the client containing the software container options enumerated in the ORO.

In addition to the above, the following points need to be considered:

- In the configuration message flows described above, the Message-Authenticator (type 80) [RFC2869] should be used to protect both Access-Request and Access-Accept messages.
- If the BNG does not receive the corresponding Software46-Configuration Attribute in the Access-Accept message, it may fall back to creating the DHCPv6 software configuration options using the preconfigured Software46 configuration if this is present.
- If the BNG receives an Access-Reject from the AAA server, then the Software46 configuration must not be supplied to the client.

- As specified in [Section 18.2.5](#) of [\[RFC8415\]](#) ("Creation and Transmission of Rebind Messages") if the DHCPv6 server to which the DHCPv6 Renew message was sent at time T1 has not responded by time T2, the CE (DHCPv6 client) should enter the Rebind state and attempt to contact any available server. In this situation, a secondary BNG receiving the DHCPv6 message must initiate a new Access-Request message towards the AAA server. The secondary BNG includes the Software46-Configuration Attribute in this Access-Request message.
- For Lightweight 4over6, the CE's binding state needs to be synchronized between the clients and the Lightweight AFTR (lwAFTR)/BR. This can be achieved in two ways: static preconfiguration of the bindings on both the AAA server and lwAFTR or on demand, whereby the AAA server updates the lwAFTR with the CE's binding state as it is created or deleted.

In some deployments, the DHCP server may use the Accounting-Request to report the software configuration returned to a requesting host to a AAA server. It is the responsibility of the DHCP server to ensure the consistency of the configuration provided to the requesting hosts. Reported data to a AAA server may be required for various operational purposes (e.g., regulatory).

A configuration change (e.g., BR address) may result in an exchange of CoA-Requests between the BNG and the AAA server, as shown in [Figure 3](#). Concretely, when the BNG receives a CoA-Request message containing Software46 attributes, it sends a DHCPv6 Reconfigure message to the appropriate CE to inform that CE that an updated configuration is available. Upon receipt of such a message, the CE sends a DHCPv6 Renew or Information-Request in order to receive the updated Software46 configuration. In deployments where the BNG embeds a DHCPv6 relay, CoA-Requests can be used following the procedure specified in [\[RFC6977\]](#).

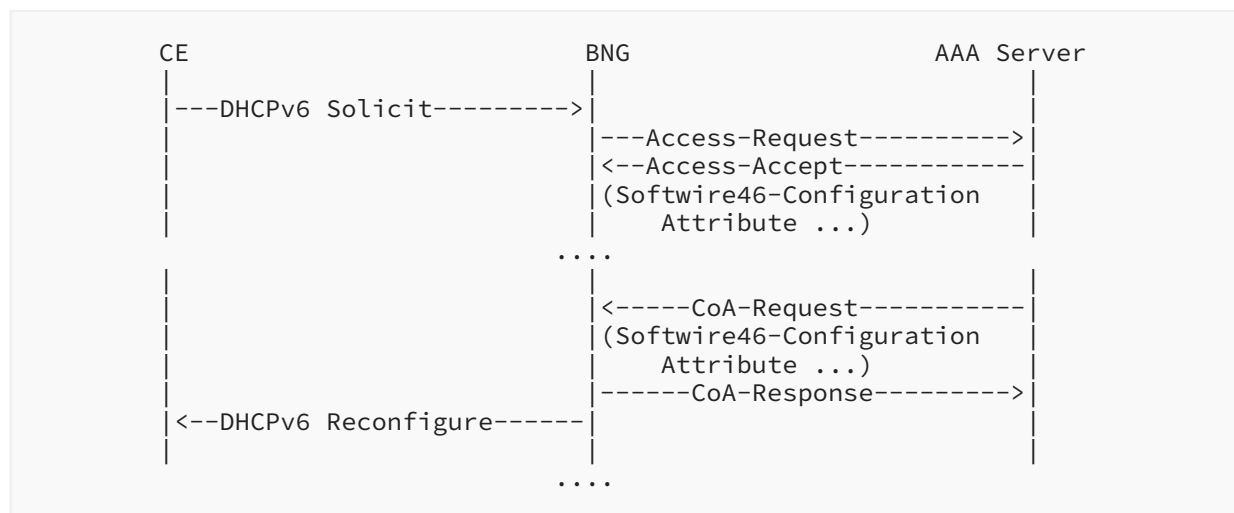


Figure 3: Change of Configuration Example

5. Table of Attributes

This document specifies three new RADIUS attributes, and their formats are as follows:

- Softwire46-Configuration Attribute: 241.9
- Softwire46-Priority Attribute: 241.10
- Softwire46-Multicast Attribute: 241.11

[Table 3](#) describes which attributes may be found in which kinds of packets and in what quantity.

Request	Accept	Reject	Challenge	Acct Req	CoA-Req	#	Attribute
0-1	0-1	0	0	0-1	0-1	241.9	Softwire46-Configuration
0-1	0-1	0	0	0-1	0-1	241.10	Softwire46-Priority
0-1	0-1	0	0	0-1	0-1	241.11	Softwire46-Multicast

Table 3: Table of Attributes

6. Security Considerations

[Section 9](#) of [\[RFC7596\]](#) discusses security issues related to Lightweight 4over6; [Section 10](#) of [\[RFC7597\]](#) discusses security issues related to MAP-E; [Section 13](#) of [\[RFC7599\]](#) discusses security issues related to MAP-T; and [Section 9](#) of [\[RFC8114\]](#) discusses security issues related to the delivery of IPv4 multicast services to IPv4 clients over an IPv6 multicast network.

This document does not introduce any security issues inherently different from those already identified in [Section 8](#) of [\[RFC2865\]](#) and [Section 6](#) of [\[RFC5176\]](#) for CoA messages. Known security vulnerabilities of the RADIUS protocol discussed in [Section 7](#) of [\[RFC2607\]](#) and [Section 7](#) of [\[RFC2869\]](#) apply to this specification. These well-established properties of the RADIUS protocol place some limitations on how it can safely be used, since there is some inherent requirement to trust the counterparty to not misbehave.

Accordingly, this document targets deployments where a trusted relationship is in place between the RADIUS client and server, with communication optionally secured by IPsec or Transport Layer Security (TLS) [\[RFC6614\]](#). The use of IPsec [\[RFC4301\]](#) for providing security when RADIUS is carried in IPv6 is discussed in [\[RFC3162\]](#).

Security considerations for interactions between a Softwire46 CE and the BNG are discussed in [Section 9](#) of [\[RFC7598\]](#) (DHCPv6 options for the configuration of Softwire46 address and port-mapped clients), [Section 3](#) of [\[RFC8026\]](#) (a DHCPv6-based Softwire46 prioritization mechanism), and [Section 5](#) of [\[RFC8115\]](#) (DHCPv6 options for configuration of IPv4-embedded IPv6 prefixes).

7. IANA Considerations

IANA has made new code point assignments for RADIUS attributes as described in the following subsections. The assignments should use the RADIUS registry available at <<https://www.iana.org/assignments/radius-types/>>.

7.1. New RADIUS Attributes

IANA has assigned the attribute types defined in this document from the RADIUS namespace as described in Section 2 (IANA Considerations) of [RFC3575], in accordance with BCP 26 [RFC8126].

IANA has registered three new RADIUS attributes from the "Short Extended Space" section of [RFC6929]. The attributes are the Softwire46-Configuration Attribute, Softwire46-Priority Attribute, and Softwire46-Multicast Attribute:

Type	Description	Data Type	Reference
241.9	Softwire46-Configuration	tlv	Section 3.1
241.10	Softwire46-Priority	tlv	Section 3.2
241.11	Softwire46-Multicast	tlv	Section 3.3

Table 4: New RADIUS Attributes

7.2. RADIUS Softwire46 Configuration and Multicast Attributes

IANA has created a new registry called "RADIUS Softwire46 Configuration and Multicast Attributes".

All attributes in this registry have one or more parent RADIUS attributes in nesting (refer to [RFC6929]).

This registry has been initially populated with the following values:

Value	Description	Data Type	Reference
0	Reserved		
1	Softwire46-MAP-E	tlv	Section 3.1.1.1
2	Softwire46-MAP-T	tlv	Section 3.1.1.2
3	Softwire46-Lightweight-4over6	tlv	Section 3.1.1.3
4	Softwire46-Rule (BMR)	tlv	Section 3.1.3.1
5	Softwire46-Rule (FMR)	tlv	Section 3.1.3.1

Value	Description	Data Type	Reference
6	Softwire46-BR	ipv6addr	Section 3.1.3.2
7	Softwire46-DMR	ipv6prefix	Section 3.1.3.3
8	Softwire46-V4V6Bind	tlv	Section 3.1.3.4
9	Softwire46-PORTPARAMS	tlv	Section 3.1.3.5
10	Rule-IPv6-Prefix	ipv6prefix	Section 3.1.4.1
11	Rule-IPv4-Prefix	ipv4prefix	Section 3.1.4.2
12	EA-Length	integer	Section 3.1.4.3
13	IPv4-Address	ipv4addr	Section 3.1.5.1
14	Bind-IPv6-Prefix	ipv6prefix	Section 3.1.5.2
15	PSID-Offset	integer	Section 3.1.6.1
16	PSID-Len	integer	Section 3.1.6.2
17	PSID	integer	Section 3.1.6.3
18	Softwire46-Option-Code	integer	Section 3.2.1
19	ASM-Prefix64	ipv6prefix	Section 3.3.1
20	SSM-Prefix64	ipv6prefix	Section 3.3.2
21	U-Prefix64	ipv6prefix	Section 3.3.3
22-255	Unassigned		

Table 5: RADIUS Softwire46 Configuration and Multicast Attributes

The registration procedure for this registry is Standards Action as defined in [\[RFC8126\]](#).

7.3. Softwire46 Mechanisms and Their Identifying Option Codes

The Softwire46-Priority Attribute conveys an ordered list of option codes assigned to Softwire46 mechanisms, for which IANA has created and will maintain a new registry titled "Option Codes Permitted in the Softwire46-Priority Attribute".

Table 6 shows the initial version of allowed option codes and the Softwire46 mechanisms that they represent. The option code for DS-Lite is derived from the IANA-allocated RADIUS Attribute Type value for DS-Lite [RFC6519]. The option codes for MAP-E, MAP-T, and Lightweight 4over6 are the TLV-Type values for the MAP-E, MAP-T, and Lightweight 4over6 attributes defined in Section 3.1.1.

Option Code	Softwire46 Mechanism	Reference
1	MAP-E	[RFC7597]
2	MAP-T	[RFC7599]
3	Lightweight 4over6	[RFC7596]
144	DS-Lite	[RFC6519]

Table 6: Option Codes to S46 Mechanisms

Additional option codes may be added to this list in the future using the IETF Review process described in Section 4.8 of [RFC8126].

8. References

8.1. Normative References

- [RFC2119] Bradner, S., "Key words for use in RFCs to Indicate Requirement Levels", BCP 14, RFC 2119, DOI 10.17487/RFC2119, March 1997, <<https://www.rfc-editor.org/info/rfc2119>>.
- [RFC2865] Rigney, C., Willens, S., Rubens, A., and W. Simpson, "Remote Authentication Dial In User Service (RADIUS)", RFC 2865, DOI 10.17487/RFC2865, June 2000, <<https://www.rfc-editor.org/info/rfc2865>>.
- [RFC3162] Aboba, B., Zorn, G., and D. Mitton, "RADIUS and IPv6", RFC 3162, DOI 10.17487/RFC3162, August 2001, <<https://www.rfc-editor.org/info/rfc3162>>.
- [RFC3575] Aboba, B., "IANA Considerations for RADIUS (Remote Authentication Dial In User Service)", RFC 3575, DOI 10.17487/RFC3575, July 2003, <<https://www.rfc-editor.org/info/rfc3575>>.
- [RFC5080] Nelson, D. and A. DeKok, "Common Remote Authentication Dial In User Service (RADIUS) Implementation Issues and Suggested Fixes", RFC 5080, DOI 10.17487/RFC5080, December 2007, <<https://www.rfc-editor.org/info/rfc5080>>.
- [RFC5176] Chiba, M., Dommety, G., Eklund, M., Mitton, D., and B. Aboba, "Dynamic Authorization Extensions to Remote Authentication Dial In User Service (RADIUS)", RFC 5176, DOI 10.17487/RFC5176, January 2008, <<https://www.rfc-editor.org/info/rfc5176>>.

- [RFC6052] Bao, C., Huitema, C., Bagnulo, M., Boucadair, M., and X. Li, "IPv6 Addressing of IPv4/IPv6 Translators", RFC 6052, DOI 10.17487/RFC6052, October 2010, <<https://www.rfc-editor.org/info/rfc6052>>.
- [RFC6158] DeKok, A., Ed. and G. Weber, "RADIUS Design Guidelines", BCP 158, RFC 6158, DOI 10.17487/RFC6158, March 2011, <<https://www.rfc-editor.org/info/rfc6158>>.
- [RFC6929] DeKok, A. and A. Lior, "Remote Authentication Dial In User Service (RADIUS) Protocol Extensions", RFC 6929, DOI 10.17487/RFC6929, April 2013, <<https://www.rfc-editor.org/info/rfc6929>>.
- [RFC8026] Boucadair, M. and I. Farrer, "Unified IPv4-in-IPv6 Software Customer Premises Equipment (CPE): A DHCPv6-Based Prioritization Mechanism", RFC 8026, DOI 10.17487/RFC8026, November 2016, <<https://www.rfc-editor.org/info/rfc8026>>.
- [RFC8044] DeKok, A., "Data Types in RADIUS", RFC 8044, DOI 10.17487/RFC8044, January 2017, <<https://www.rfc-editor.org/info/rfc8044>>.
- [RFC8115] Boucadair, M., Qin, J., Tsou, T., and X. Deng, "DHCPv6 Option for IPv4-Embedded Multicast and Unicast IPv6 Prefixes", RFC 8115, DOI 10.17487/RFC8115, March 2017, <<https://www.rfc-editor.org/info/rfc8115>>.
- [RFC8126] Cotton, M., Leiba, B., and T. Narten, "Guidelines for Writing an IANA Considerations Section in RFCs", BCP 26, RFC 8126, DOI 10.17487/RFC8126, June 2017, <<https://www.rfc-editor.org/info/rfc8126>>.
- [RFC8174] Leiba, B., "Ambiguity of Uppercase vs Lowercase in RFC 2119 Key Words", BCP 14, RFC 8174, DOI 10.17487/RFC8174, May 2017, <<https://www.rfc-editor.org/info/rfc8174>>.
- [RFC8415] Mrugalski, T., Siodelski, M., Volz, B., Yourtchenko, A., Richardson, M., Jiang, S., Lemon, T., and T. Winters, "Dynamic Host Configuration Protocol for IPv6 (DHCPv6)", RFC 8415, DOI 10.17487/RFC8415, November 2018, <<https://www.rfc-editor.org/info/rfc8415>>.

8.2. Informative References

- [LIGHTWEIGHT-4OVER6] Xie, C., Sun, Q., Qiong, Q., Zhou, C., Tsou, T., and Z. Liu, "Radius Extension for Lightweight 4over6", Work in Progress, Internet-Draft, draft-sun-softwire-lw4over6-radext-01, 6 March 2014, <<https://tools.ietf.org/html/draft-sun-softwire-lw4over6-radext-01>>.
- [RADIUS-EXT] Wang, Q., Meng, W., Wang, C., and M. Boucadair, "RADIUS Extensions for IPv4-Embedded Multicast and Unicast IPv6 Prefixes", Work in Progress, Internet-Draft, draft-wang-radext-multicast-radius-ext-00, 2 December 2015, <<https://tools.ietf.org/html/draft-wang-radext-multicast-radius-ext-00>>.
- [RFC2607] Aboba, B. and J. Vollbrecht, "Proxy Chaining and Policy Implementation in Roaming", RFC 2607, DOI 10.17487/RFC2607, June 1999, <<https://www.rfc-editor.org/info/rfc2607>>.

-
- [RFC2869] Rigney, C., Willats, W., and P. Calhoun, "RADIUS Extensions", RFC 2869, DOI 10.17487/RFC2869, June 2000, <<https://www.rfc-editor.org/info/rfc2869>>.
- [RFC4301] Kent, S. and K. Seo, "Security Architecture for the Internet Protocol", RFC 4301, DOI 10.17487/RFC4301, December 2005, <<https://www.rfc-editor.org/info/rfc4301>>.
- [RFC6333] Durand, A., Droms, R., Woodyatt, J., and Y. Lee, "Dual-Stack Lite Broadband Deployments Following IPv4 Exhaustion", RFC 6333, DOI 10.17487/RFC6333, August 2011, <<https://www.rfc-editor.org/info/rfc6333>>.
- [RFC6346] Bush, R., Ed., "The Address plus Port (A+P) Approach to the IPv4 Address Shortage", RFC 6346, DOI 10.17487/RFC6346, August 2011, <<https://www.rfc-editor.org/info/rfc6346>>.
- [RFC6519] Maglione, R. and A. Durand, "RADIUS Extensions for Dual-Stack Lite", RFC 6519, DOI 10.17487/RFC6519, February 2012, <<https://www.rfc-editor.org/info/rfc6519>>.
- [RFC6614] Winter, S., McCauley, M., Venaas, S., and K. Wierenga, "Transport Layer Security (TLS) Encryption for RADIUS", RFC 6614, DOI 10.17487/RFC6614, May 2012, <<https://www.rfc-editor.org/info/rfc6614>>.
- [RFC6977] Boucadair, M. and X. Pournard, "Triggering DHCPv6 Reconfiguration from Relay Agents", RFC 6977, DOI 10.17487/RFC6977, July 2013, <<https://www.rfc-editor.org/info/rfc6977>>.
- [RFC7596] Cui, Y., Sun, Q., Boucadair, M., Tsou, T., Lee, Y., and I. Farrer, "Lightweight 4over6: An Extension to the Dual-Stack Lite Architecture", RFC 7596, DOI 10.17487/RFC7596, July 2015, <<https://www.rfc-editor.org/info/rfc7596>>.
- [RFC7597] Troan, O., Ed., Dec, W., Li, X., Bao, C., Matsushima, S., Murakami, T., and T. Taylor, Ed., "Mapping of Address and Port with Encapsulation (MAP-E)", RFC 7597, DOI 10.17487/RFC7597, July 2015, <<https://www.rfc-editor.org/info/rfc7597>>.
- [RFC7598] Mrugalski, T., Troan, O., Farrer, I., Perreault, S., Dec, W., Bao, C., Yeh, L., and X. Deng, "DHCPv6 Options for Configuration of Software Address and Port-Mapped Clients", RFC 7598, DOI 10.17487/RFC7598, July 2015, <<https://www.rfc-editor.org/info/rfc7598>>.
- [RFC7599] Li, X., Bao, C., Dec, W., Ed., Troan, O., Matsushima, S., and T. Murakami, "Mapping of Address and Port using Translation (MAP-T)", RFC 7599, DOI 10.17487/RFC7599, July 2015, <<https://www.rfc-editor.org/info/rfc7599>>.
- [RFC8114] Boucadair, M., Qin, C., Jacquenet, C., Lee, Y., and Q. Wang, "Delivery of IPv4 Multicast Services to IPv4 Clients over an IPv6 Multicast Network", RFC 8114, DOI 10.17487/RFC8114, March 2017, <<https://www.rfc-editor.org/info/rfc8114>>.

Appendix A. DHCPv6 to RADIUS Field Mappings

The following sections detail the mappings between the software DHCPv6 option fields and the relevant RADIUS attributes as defined in this document.

A.1. OPTION_S46_RULE (89) to Software46-Rule Sub-TLV Field Mappings

OPTION_S46_RULE Field	Software46-Rule Name	TLV Subfield
flags	N/A	TLV-type (4, 5)
ea-len	EA-Length	EA-len
prefix4-len	Rule-IPv4-Prefix	Prefix-Length
ipv4-prefix	Rule-IPv4-Prefix	rule-ipv4-prefix
prefix6-len	Rule-IPv6-Prefix	Prefix-Length
ipv6-prefix	Rule-IPv6-Prefix	rule-ipv6-prefix

Table 7: OPTION_S46_RULE to Software46-Rule Sub-TLV Field Mappings

A.2. OPTION_S46_BR (90) to Software46-BR Field Mappings

OPTION_S46_BR Field	Software46-BR Subfield
br-ipv6-address	br-ipv6-address

Table 8: OPTION_S46_BR to Software46-BR Field Mappings

A.3. OPTION_S46_DMR (91) to Software46-DMR

OPTION_S46_DMR Field	Software46-DMR Subfield
dmr-prefix6-len	dmr-prefix6-len
dmr-ipv6-prefix	dmr-ipv6-prefix

Table 9: OPTION_S46_DMR to Software46-DMR Field Mappings

A.4. OPTION_S46_V4V6BIND (92) to Software46-V4V6Bind

OPTION_S46_V4V6BIND Field	Softwire46-V4V6Bind Name	TLV Subfield
ipv4-address	IPv4-Address	ipv4-address
bindprefix6-len	Bind-IPv6-Prefix	Prefix-Length
bind-ipv6-prefix	Bind-IPv6-Prefix	bind-ipv6-prefix

Table 10: OPTION_S46_V4V6BIND to Softwire46-V4V6Bind Field Mappings

A.5. OPTION_S46_PORTPARAMS (93) to Softwire46-PORTPARAMS Field Mappings

OPTION_S46_PORTPARAMS Field	Softwire46-PORTPARAMS Name	TLV Subfield
offset	PSID-Offset	PSID-Offset
PSID-len	PSID-Len	PSID-len
PSID	PSID	PSID

Table 11: OPTION_S46_PORTPARAMS to Softwire46-PORTPARAMS Field Mappings

A.6. OPTION_S46_PRIORITY (111) to Softwire46-PORTPARAMS Field Mappings

OPTION_S46_PRIORITY Field	Softwire46-Priority Attribute Subfield
s46-option-code	Softwire46-option-code

Table 12: OPTION_S46_PRIORITY to Softwire46-PORTPARAMS Field Mappings

A.7. OPTION_V6_PREFIX64 (113) to Softwire46-Multicast Attribute Field Mappings

OPTION_V6_PREFIX64 Field	Softwire46-Multicast Attribute TLV Name	TLV Subfield
asm-length	ASM-Prefix64	Prefix-Length
ASM_mPrefix64	ASM-Prefix64	asm-prefix64
ssm-length	SSM-Prefix64	Prefix-Length
SSM_mPrefix64	SSM-Prefix64	ssm-prefix64
unicast-length	U-Prefix64	Prefix-Length

OPTION_V6_PREFIX64 Field	Softwire46-Multicast Attribute TLV Name	TLV Subfield
uPrefix64	U-Prefix64	u-prefix64

Table 13: *OPTION_V6_PREFIX64 to Softwire46-Multicast Field Mappings*

Acknowledgements

The authors would like to thank Peter Lothberg, Wojciech Dec, Ian Farrer, Suresh Krishnan, Qian Wang, Wei Meng, Cui Wang, Alan Dekok, Stefan Winter, and Yu Tianpeng for their valuable comments regarding this document.

This document was merged with [[LIGHTWEIGHT-4OVER6](#)] and [[RADIUS-EXT](#)]. Thanks to everyone who contributed to this document.

Many thanks to Al Morton, Bernie Volz, Joel Halpern, and Donald Eastlake for the review.

Contributors

Bing Liu
Huawei Technologies Co., Ltd.
China

Email: leo.liubing@huawei.com

Peter Deacon
IEA Software, Inc.
United States of America

Email: peterd@iea-software.com

Qiong Sun
China Telecom
China

Email: sunqiong@ctbri.com.cn

Qi Sun
Tsinghua University
China

Email: sunqibupt@gmail.com

Cathy Zhou
Huawei Technologies
China

Email: cathy.zhou@huawei.com

Tina Tsou
Huawei Technologies (USA)
United States of America

Email: Tina.Tsou.Zouting@huawei.com

ZiLong Liu
Tsinghua University
China

Email: liuzilong8266@126.com

Yong Cui
Tsinghua University
China

Email: yong@csnet1.cs.tsinghua.edu.cn

Authors' Addresses

Sheng Jiang (EDITOR)

China
Hai-Dian District, Beijing, 100095
Q14, Huawei Campus, No.156 Beiqing Road
Huawei Technologies Co., Ltd.
Email: jiangsheng@huawei.com

Yu Fu (EDITOR)

China
Hai-Dian District, Beijing, 100190
No.4 South 4th Street, Zhongguancun
CNNIC
Email: eleven711711@foxmail.com

Chongfeng Xie

China
Beijing
China Telecom
Email: xiechf.bri@chinatelecom.cn

Tianxiang Li

China

100084

Beijing

Tsinghua University

Email: peter416733@gmail.com**Mohamed Boucadair (EDITOR)**

Orange

35000 Rennes

France

Email: mohamed.boucadair@orange.com